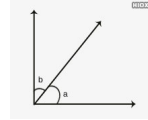


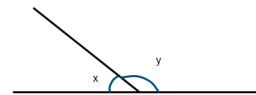
# Complementary and Supplementary Angles

## Vocabulary

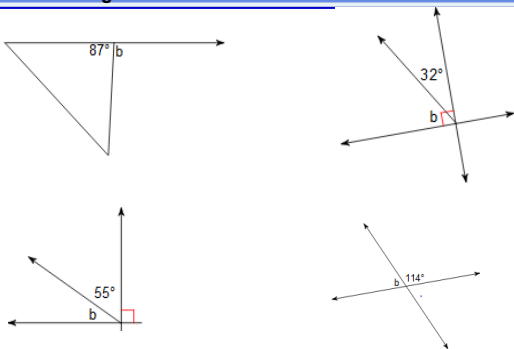
**Complementary Angles-** Two angles whose measure have a sum of 90



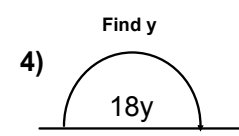
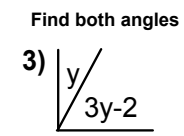
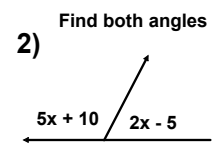
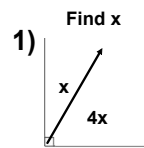
**Supplementary Angles-** Two angles whose measures have a sum of 180



Identify each angle represents Supplementary or Complementary and then find the Complement or Supplement of each angle



## Let's Use Algebra with Angles!



# Notes - Complementary & Supplementary Angles.notebook

## Try These!

A)

B)

## How About This One?

## Word Problems

Two angles are complementary. The larger angle is 5 times greater than the smaller angle. Find the measure of the 2 angles.

HINT

ANSWER

Two angles are supplementary. The larger angle is 2 more than 4 times the smaller angle. Find the measure of the angles.

## Word Problems

Two angles are supplementary. The larger angle is 8 times greater than the smaller angle. Find the measure of the 2 angles.

HINT

ANSWER

The measure of the supplement of an angle is  $10^\circ$  more than four times the original angle. Find the measure of the two angles.

HINT

ANSWER